



[www.kings-group.net](http://www.kings-group.net)

248 Hoe Street  
Walthamstow E17 3AX  
Tel: 020 8521 1122

Mandeville Court, London, E4 8JB  
£1,150



A smart and contemporary one bedroom flat, situated on the ground floor of a modern, purpose built block on Lower Hall Lane. Located close to the River Lea and the reservoirs, there is no shortage of green open space on your doorstep, whilst Chingford Mount is also just a stroll away for when you need to do the weekly shop. Commuting is a doddle too, thanks to the proximity of the A406.

The property itself comprises lounge/diner, kitchen, three piece family bathroom with electric shower over the tub and a double bedroom. There are communal gardens surrounding the block, and the flat also has the benefit of a designated parking space.



Hallway  
7'10 x 3'0 (2.39m x 0.91m)

Lounge  
12'8 x 9'01 (3.86m x 2.77m)

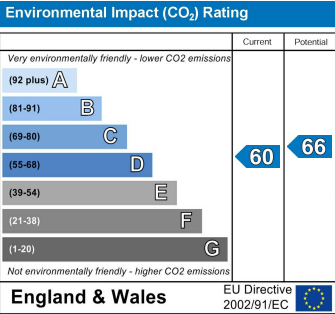
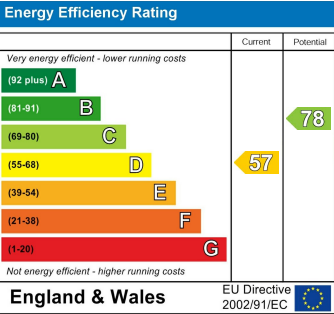
Kitchen  
8'02 x 7'05 (2.49m x 2.26m)

Bathroom  
6'06 x 4'11 (1.98m x 1.50m)

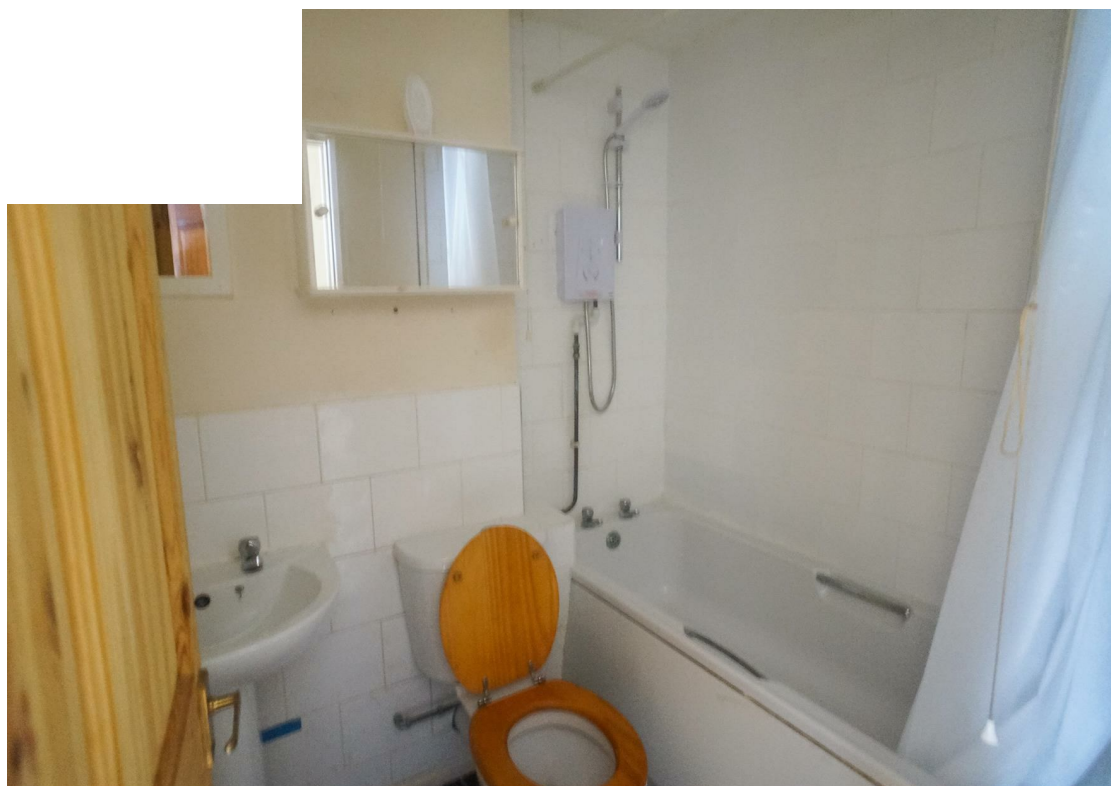
Bedroom  
10'04 x 7'10 (3.15m x 2.39m)

Communal Garden

Allocated Parking

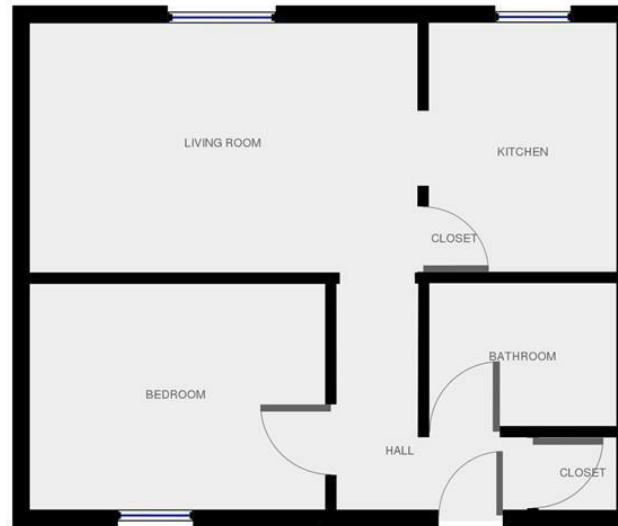








## Ground Floor



THIS FLOORPLAN IS PROVIDED WITHOUT WARRANTY OF ANY KIND. SENSOPHA DISCLAIMS ANY WARRANTY INCLUDING WITHOUT LIMITATION, SATISFACTORY QUALITY OR ACCURACY OF DIMENSIONS.

